

FLEXIROL 500 - TIMBER

Capacity:

- Maximum door weight: 500kg.
- Maximum door height: 6000mm.
- Maximum door width: 6000mm.
- Door thickness: 42mm - 100mm.

Application:

Henderson Flexirol is an aluminium track and hanger system for timber framed doors. It gives an interior designer or architect greater flexibility.

Flexirol is ideally suited to all types of installations - hotels, conference centres, shop fronts, hospitals and any site where good looks and practicality are needed from a sliding door system.

Components:

- Track - natural anodised aluminium (550). Available in 2m, 3m, 4m and 6m lengths.
- Track Jointing Strips - use four (551H/180) at each butt joint in the track.
- Brackets - adjustable face fix (1A/550).
- Hangers - stainless hanger, 16mm pendant (500/61/42).
- Hangers - stainless hanger, 16mm pendant (500/21/42).
- Guides - timber doors, stainless, plate fixing (106RB/94).
- Guides - timber doors, plate fixing (106RN/94).
- Guides - timber doors, plate fixing (106R/94).
- Guide channel - brass (94). Available in 1.6m, 2m, 2.5m, 3m and 3.2m lengths.
- Guide channel - aluminium (94X). Available in 1.6m, 2m, 2.5m, 3m and 3.2m lengths.
- Guide channel - aluminium anodised (94XNAA). Available in 1.6m, 2m, 2.5m, 3m and 3.2m lengths.
- Guide channel - aluminium anodised, combination threshold/guide channel (94T). Available in 2m, 3m, 4m and 6m lengths.
- Guide channel - polypropylene (94P). Available in 2m, 3m, 4m and 6m lengths.
- Guide channel - polypropylene with aluminium support (94PA). Available in 2m, 3m, 4m and 6m lengths.

Optional Extras:

- Flush Pulls.
- Flush Bolts.
- Handles.
- Track stop - (HH3/301/SS).

Please note:

- The aluminium track is supplied in a natural anodised finish.
- Please refer to component section for component options and technical detail.



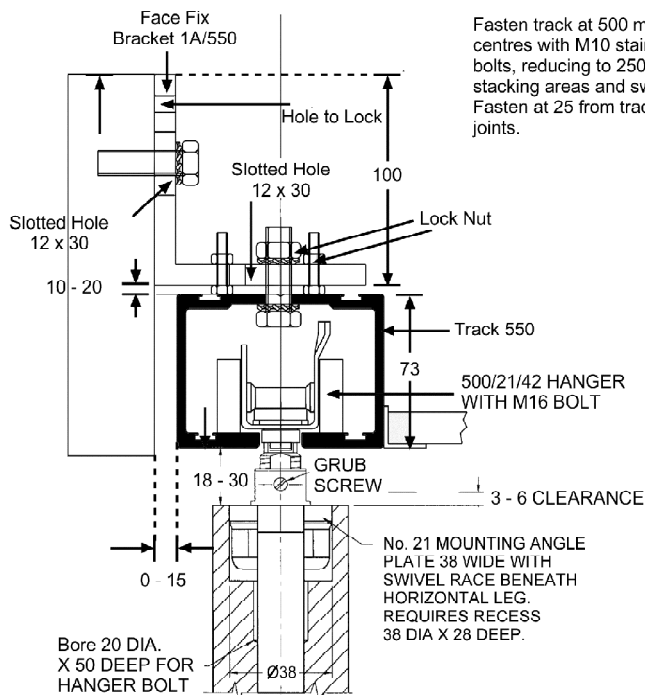
FLEXIROL 500 - TIMBER

EXT

INT



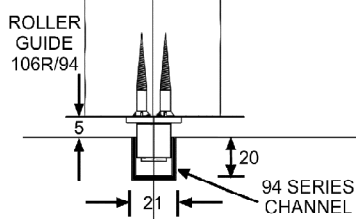
FLEXIROL 500 - TIMBER



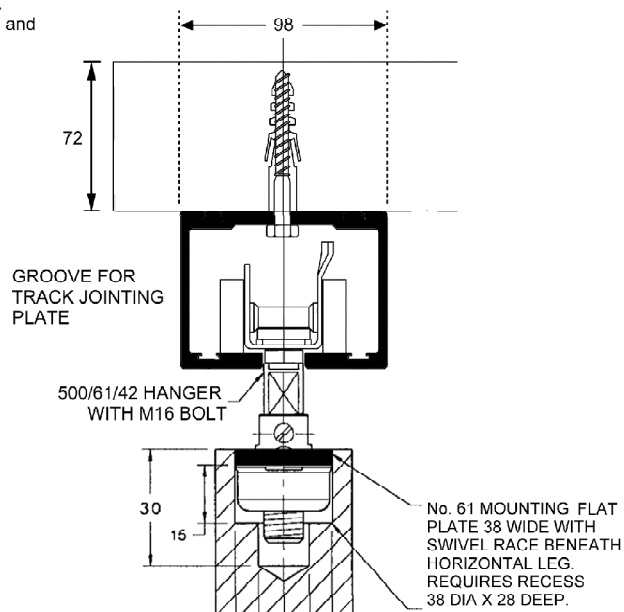
NOT TO SCALE

VERTICAL LEG OF MOUNTING ANGLE PLATE 152 LONG

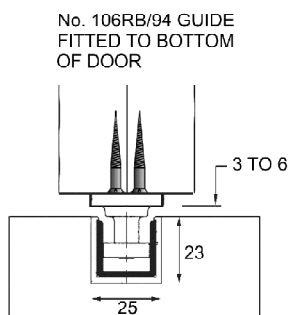
MINIMUM THICKNESS FOR TIMBER DOOR USING 21C MOUNTING ANGLE PLATE



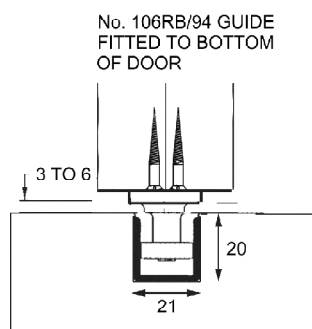
Fasten track at 500 maximum centres with M10 stainless steel bolts, reducing to 250 centres at stacking areas and switches. Fasten at 25 from track ends and joints.



NOT TO SCALE



No. 94P POLYPROPYLENE CHANNEL IN No. 94PA ALUMINIUM SUPPORT CHANNEL RECESSED INTO FLOOR.



No. 94 SERIES CHANNEL CHANNEL RECESSED INTO FLOOR.

